
HOW TO CITE APA STYLE

THE LIBRARY LEARNING COMMONS

APA – AMERICAN PSYCHOLOGICAL ASSOCIATION

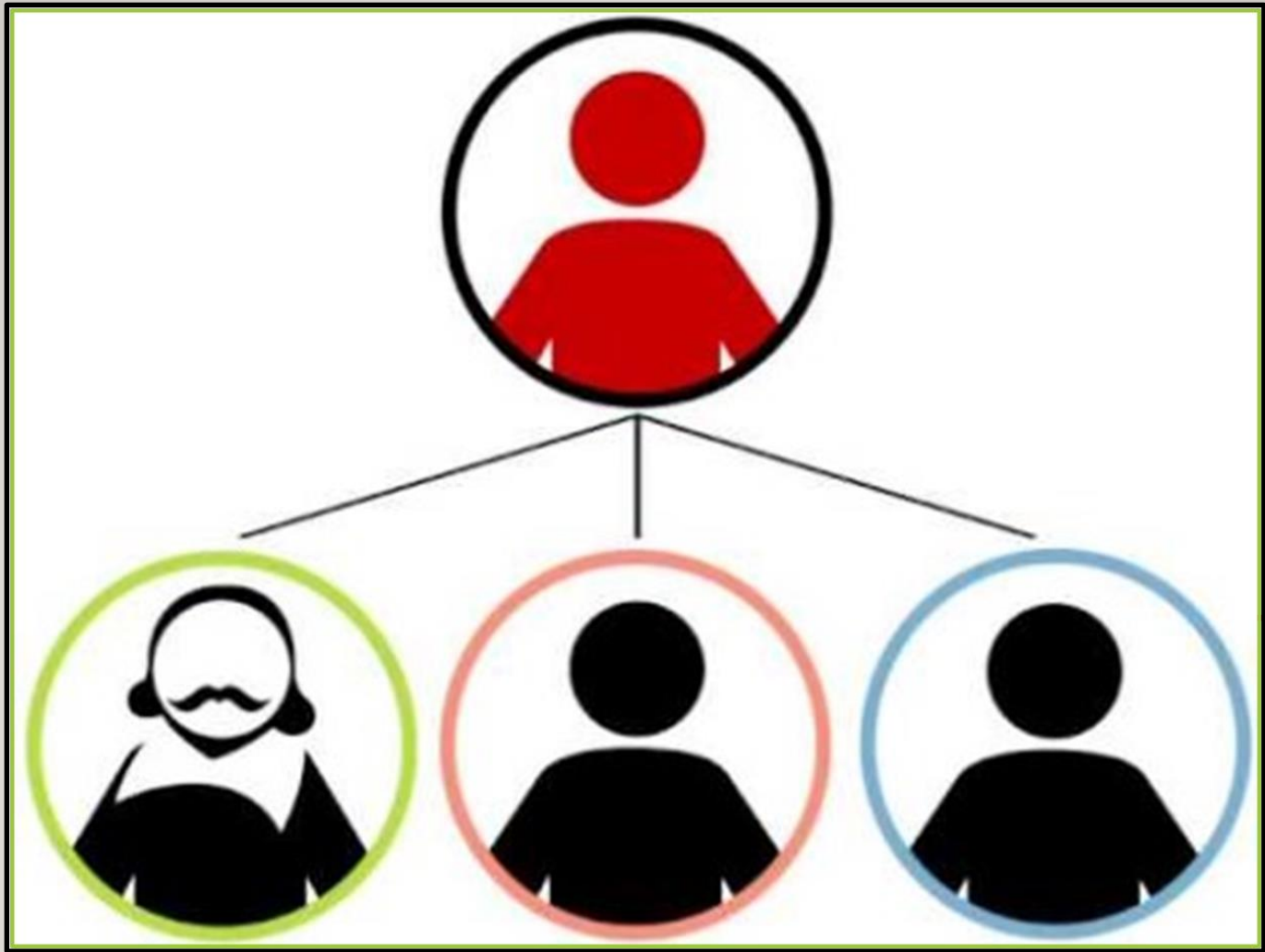
- Is used for writing scientific papers, laboratory reports and papers.
- APA 7 is the current version used.
- [The Purdue Writing Lab](#) is an excellent source to refer to for style guidelines

WHICH DEPARTMENTS USE APA?:

- Science,
- Religion
- Art
- Tech,
- Phys Ed
- Business
- Some English classes
- Law and Geography courses,
- Social Sciences and Family Studies courses.

TOPICS COVERED:

- Why should I cite?
- APA 7 Changes
- Formatting
- In-Text Citations
- References list (a.k.a. Bibliography)



WHY SHOULD I CITE?

<https://www.youtube.com/watch?v=w7ukz2DuX8U>

APA 7 CHANGES

WHAT HAS CHANGED FROM APA 6 TO APA 7?

1. **Website names**: Website names are now included as well as the webpage title.
2. **Publication location**: The location of the publisher (i.e., city, country/state code) is no longer required.
3. **"Retrieved from"**: You no longer need to write "Retrieved from" before a URL.

Example:

APA 6

Morgenstern, E. (2019). *The Starless Sea*. New York, NY: Random House Inc.

APA 7

Morgenstern, E. (2019). *The Starless Sea*. Random House Inc.

APA 6

Kmec, J. (2012, March 13). *Where's the Boss? And What Counts as "Work"?*

Retrieved from:

<https://thesocietypages.org/socimages/2012/03/13/wheres-the-boss-and-what-counts-as-work/>

APA 7

Kmec, J. (2012, March 13). *Where's the Boss? And What Counts as "Work"?* *The Society Pages*.

<https://thesocietypages.org/socimages/2012/03/13/wheres-the-boss-and-what-counts-as-work/>




FORMATTING

FORMATTING

1. Type APA papers on white, 8.5x11 paper
2. Set margins to 1" on all sides
3. Double-space all text
4. Use a legible and consistent font: Times New Roman, Arial or Calibri in 12-point size

Continued on the next page...



FORMATTING CONTINUED...

5. Include a **title page**:

- Include the title, your name, course number and name, teacher name, and assignment due date.

6. Include a **page header**:

- Type “The Title of Your Paper” in the left margin
- Insert the page number in the right margin

Sample
Title
Page

The Title of My Paper

Your Name
Course Name and Course Code
Teacher Name
Assignment Due Date

SAMPLE
HEADER
PAGE

The Title of My Paper

1

IN-TEXT CITATIONS

IN-TEXT CITATIONS

- When information is quoted or referred to in a paper, briefly identify the source and allow the reader to locate the full citation in your reference list.
- Follow the author, date method of in-text citation (Engell, 2020).
- References made in text **MUST** appear in the references list.
- Use (n.d.) for no date.
- Ignore The, A, An when alphabetizing the list.

SIGNAL PHRASES:

- Are clear and short sentences used to integrate in a paper the words, ideas, and facts that have been borrowed from other authors (ex. when including quotations, statistics, etc.)
- Use the **past tense** or **present-perfect tense** when using signal phrases, e.g., “Jones (2020) found” or “Jones (2020) has found”

IN-TEXT CITATIONS

Example of Block Quote in APA Format

Introduction for quotation

Author Date of publication in parenthesis

[Wetli (2019), in her literature review about inclusivity in archival spaces, noted that:

Scholar's [sic] view archives as the custodial spaces of history and its artifacts, a model which predicates ownership, power, and control. To negate this, many organizations have moved towards a model of stewardship. These institutional archives work cooperatively with the communities whose histories they are preserving by providing stable infrastructure, training, and technological support. (p. 4)

Indent quote 1/2 inch from Introduction

Page number in parenthetical in-text citation

- Place direct quotations longer than 40 words in a free-standing block of double-spaced lines and do not include quotation marks.
- Start the quotation on a new line with all lines indented 0.5" from the left margin.
- Put the citation after the period.

IN-TEXT CITATIONS AND SIGNAL PHRASES

- **Gibson and Roberts (2008)** discussed the turbulent 1960's , science fiction programs..
- In a **2008 study, Gibson and Roberts** explain how, during the turbulent 1960's, science fiction progams....
- During the turbulent 1960's, science fiction programs on television reflected the public's attitude toward the older generation (**Gibson and Roberts, 2008**)

A WORK WITH THREE OR MORE AUTHORS:

- A work with three or more authors can use “et al.”
- This stands for “all others” in Italian.

Example:

- **Engell et al.** has found that students at Assumption College School better understand APA referencing after viewing this PowerPoint (2020).

UNKNOWN AUTHOR:

- If the work does not have an author, cite the source by its title in the signal phrase or use the first word or two in the parentheses. Italicize titles of books and reports; titles of articles and chapters go in quotation marks.

Example:

A similar study was conducted with students learning to format research papers (“Using APA,” 2001).

AN ORGANIZATION AS AUTHOR

- For organization or government agency authors, mention organizations in the signal phrase or the parenthetical citation the first time you cite it.

Example:

According to the American Psychological Association (APA) (2020),...

REFERENCES

(A.K.A. BIBLIOGRAPHY)

REFERENCES LIST

1. References lists appear at the end of papers on a separate page.
2. Center and type the word “References” at the top of your list.
3. All lines after the first line of each source in the list should be indented 0.5” from the left margin.
4. Author’s names are organized alphabetically with the initial only of the first name.
5. Sources should be double-spaced.

Example: A Page on a Website:

Author, A.A. (Date), *Title of Page*. Site Name. URL

CITATION GENERATORS

Words of caution:

- First, ask your teacher if you can use one
- When using citation generators such as www.citationmachine.net or www.easybib.com be sure it has gathered all the correct information on the source such as the author and date (go back and check).

STILL HAVE QUESTIONS...

1. Visit [The Purdue Online Writing Lab](#)
2. Email: Mrs. Engell at cengell@bhncdsb.ca
3. Consult the [handout](#) and other information on the [ACS Online Library](#)



[ACS](#)
[Online](#)
[Library](#)



The Purdue Writing Lab

cengell@bhncdsb.ca

References

Academic Writing Help Center. (2016). "Signal Phrases." University of Ottawa.

<https://sass.uottawa.ca/sites/sass.uottawa.ca/files/awhc-signal-phrases.pdf>

Bouwens, K. & Atherton, R. (2019). Purdue Owl APA Classroom Poster. *Purdue*

Professional Writing - Purdue OWL Internship class, English 490.

https://owl.purdue.edu/owl/research_and_citation/apa_style/apa_formatting_and_style_guide/images/20200129APAPoster.jpg

KULibraries. *Citation: A (Very) Brief Introduction*. (23 August 2016).

www.youtube.com/watch?v=w7ukz2DuX8U.

Engell's
References for
this PPT